

new
L305-CV

Pass-through dishwasher with steam condenser

ADVANTAGES OF THE NEW SYSTEM !

1 YOU ECONOMIZE BECAUSE IT'S NOT NECESSARY TO FEED THE DISHWASHER WITH HOT WATER.

The dishwasher is fed with cold water, so to allow immediately a first consumption saving.



2 YOU ECONOMIZE IMMEDIATELY 6 Kw !

The boiler's heating element is only 6 kW, instead of the 12 kW usually required to obtain the same performances in case of cold water feed (-50% of electric energy consumption !).

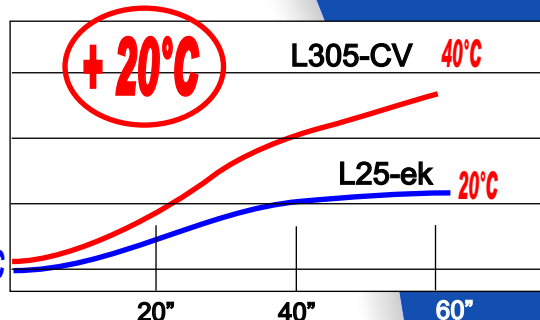
- 6kW

- 50%



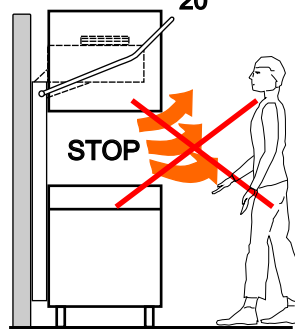
3 YOU RECOVER 20°C !

Hot air and steams, that are sucked by the upper pipe coil, give their heat to the water that flows inside the pipes, increasing this way the water's temperature of 20°C.



4 YOU WORK IN HEALTHIER ENVIRONMENTS!

On opening the hood at the end of every washing cycle, the steam emission that usually assails the user is completely eliminated.



5 AN EXTRA EXTRACTION SYSTEM IS NOT NECESSARY !

Steam emission is completely eliminated! The additional cost for a connection to a ventilation/extraction system in the dishwashing area is this way avoided.

